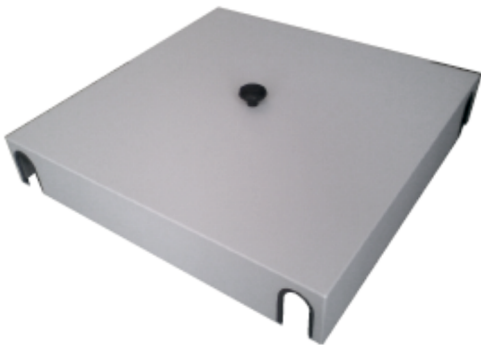


Cable Overlength Box SZK1 Q-Fiber

Description

The **Cable Overlength Box Q-Fiber** is designed for placement in the telecommunication manholes or cable cellars. It is used for arranging and winding the cable overlength, it guarantees correct bend radius of the wound cable. It protects the cable against mechanical damage. The cable overlength box holds 120 m of cable with 10 mm in diameter. The box consists of the support frame and the cover. It is possible to order the support frame or the cover alone.



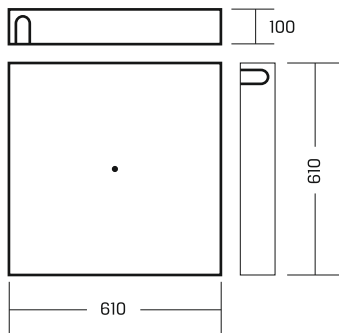
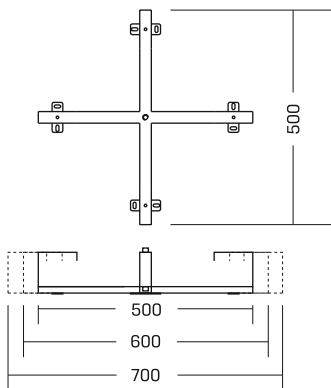
Application

Telecommunication, CATV, Monitoring, Industry, LAN, MAN, WAN, FTTx, PON.

Properties

- » Dimensions: 610 x 610 x 100 mm,
- » Capacity: 120 m of cable with 10 mm in diameter
- » Support frame made of galvanised steel
- » Corrosion-protected external housing
- » Equipped with a knob holding the cover to the frame
- » Possibility to order fixing knob with key

Photos and dimensions



How to order

- | | |
|-----------|--|
| SZK1 | Cable Overlength Box (set) |
| SZK1-O-95 | Cable Overlength Support Frame 500-700 mm (galvanised steel) |
| PSZK1 | Cover for the SupportFrame for Cable Overlength |

Information

- » Box holds 120 m of cable with 10 mm in diameter
- » Box has a holders for wall mounting
- » Cable overlength box is packed in a cardboard box

Standard equipment

- » Cable overlength support frame 500-700 mm (galvanised steel)
- » Cover for the support frame 610x610x100 mm
- » Pin
- » Fixing knob