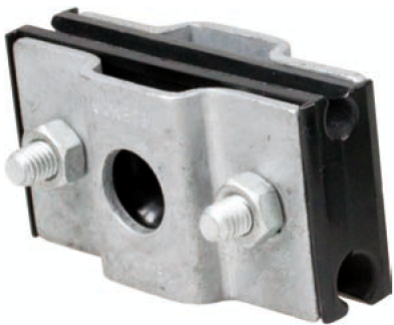


Suspension clamp

Description

Suspension clamps are composed of a UV resistant thermoplastic jaw reinforced with two galvanised steel plates. Its unique patented design has been developed to offer a common hardware fitting covering all suspension situations on wooden, metal or concrete poles. Its curved grooves and the reversibility of the system allow the clamps to be installed at intermediate poles on cables routes with angles up to 25°.

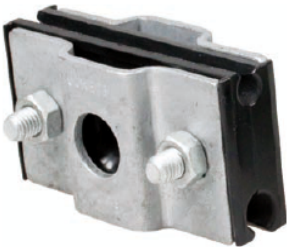


Application

Overhead data communication lines.

Photos

SC39B



Z30/34



SC37C



ARC



Properties

Symbol	Range of diameter [mm]	Weight [kg]
SC39B	3 - 9	0,10
SC37C	3 - 7	0,15
SC711C	7 -11	0,10
Z30/40	4 - 9	0,15
ARC	6 - 9	0,15

How to order

SC39B	Suspension clamp SC39B
SC37C	Suspension clamp SC37C
SC711C	Suspension clamp SC711C
Z30/34	Suspension clamp Z30/34
ARC	Suspension clamp ARC