

Telescopic Fiber Optic Distribution Frame 19" 2U Q-Fiber

Description

Telescopic Fiber Optic Distribution Frame 19" 2U Q-Fiber consists of the box and distribution board. A box with a distribution board installed on telescopes (extension 110%) guarantees the highest comfort of work both at the installation process and during subsequent maintenance works. The front panel is available in the version integrated with the drawer or as a replaceable element. Replaceable plugs make it possible to install various cable conduits. Movable side holders make it possible to withdraw the ODF by 30 mm from the mounting plane.



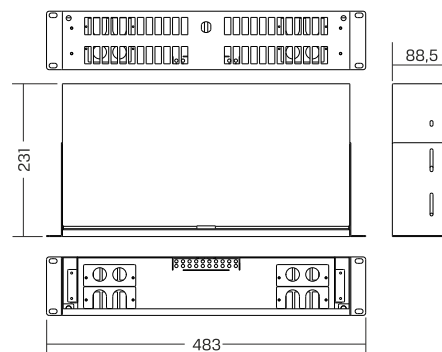
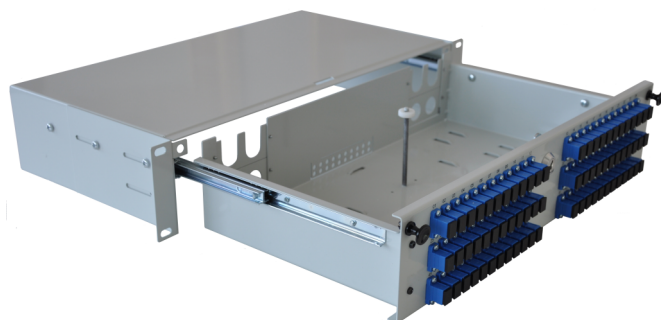
Application

Telecommunication, CATV, Monitoring, Industry, LAN, MAN, WAN.

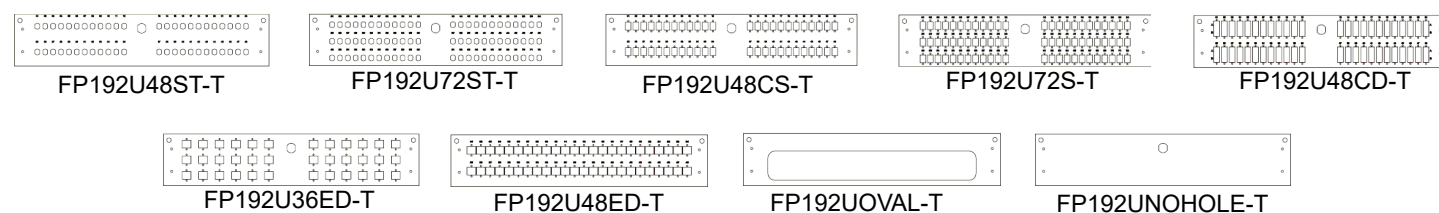
Properties

- Made of 1.2mm steel sheet
- Extension 110% on telescopic rails ,
- Embossing to attach cables inside the box,
- Boltless mounting of adapters,
- Standard color RAL7035 (light grey) glossy, RAL 9005 (black- matt structure), other colors on request,
- Dimensions [H x W x D]: 88,5x483x231 [mm],
- Temporary side handles allow the withdrawal of ODF 19" by 30 mm
- In the rear part 4x open and 4x closed openings for conduits M20x1.5 (\varnothing of the cable 6÷13mm)

Photos and dimensions



Front panels



How to order

ODF-19-2U-T*	Telescopic fiber optic distribution frame 19" 2U
ODF-19-2U-T-Z*	Telescopic fiber optic distribution frame 19" 2U with a lock
PK191U70-T	Cable overlength guide 70mm
FP192U48ST-T	Front Panel 19" 2U 48xST/FC/DIN d-hole
FP192U72ST-T	Front Panel 19" 2U 72xST/FC/DIN d-hole
FP192U48CS-T	Front Panel 19" 2U 48xSC/E2000 simplex**
FP192U72CS-T	Front Panel 19" 2U 72xSC/E2000 simplex**
FP192U48CD-T	Front Panel 19" 2U 48xSC/ST/FC duplex/LC quad
FP192U36ED-T	Front Panel 19" 2U 36xE2000 Compact
FP192U48ED-T	Front Panel 19" 2U 48xE2000 Compact
FP192UOVAL	Front Panel 19" 2U OVAL
FP192UNOHOLE-T	Front Panel 19" 2U NO HOLE

* it is possible to order a ODF with an integrated front panel as well as with extended (bolted) adapters

**suitable for LC/LX.5/MTRJ duplex SC foot print adapters

Information

- The ODF houses five cassettes DIN24 or eight cassettes DIN24 WHITE,
- Product adapted to the FiberQuick system,
- 2U ODF 19" packed in a cardboard box.

Standard equipment

- Cable gland M20x1.5 (cabel $\varnothing 6\div 13\text{mm}$) (1pc),
- Mounting screw M6 (4 pcs),
- Knurled nut M5 (1 pc),
- Snaps (2 psc).

Additional equipment

- Cable gland M20x1.5 (cabel $\varnothing 6\div 13\text{mm}$),
- Nylon cable tie 80x2.5mm,
- Pigtails,
- Splice trays,
- Adapters.