

FTTH-308 Termination Box

Description

Termination box FTTH-308

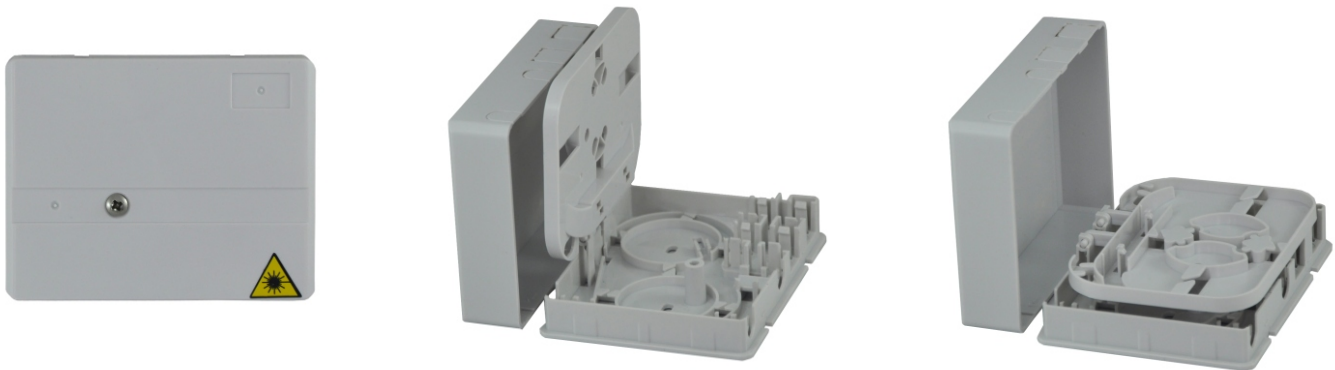
- » FTTH-308 is designed for wall and pole mount applications
- » Maximum capacity: 4 fibers
- » ROHS compliance



Properties

- » Resistance to vibration and shock
- » Modern and innovating design
- » Made of engineering plastic material
- » Available for SC and LC adapter

Photos



How to order

FTTH-308 FTTH-308 Termination box

Information

- » Cable ports: 3 x max. \varnothing 12 mm
- » Maximum capacity: 4 fibers
- » Size: 108,5 x 85 x 27 mm

Accessories

- » Pigtails
- » Adapters
- » Splice protectors