

FTTH-108 Termination Box

Description

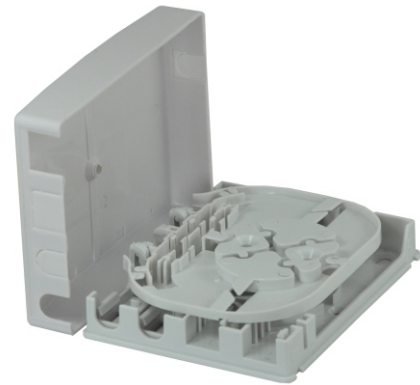
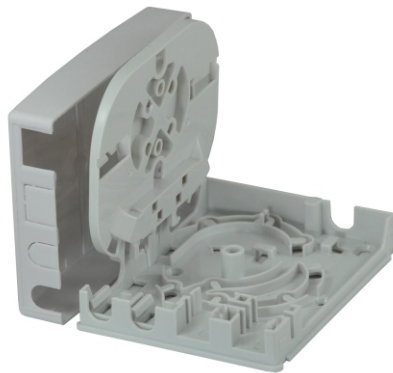
- Termination box FTTH-108
- » FTTH-108 is designed for wall mount applications
 - » Maximum capacity: 4 fibers
 - » ROHS compliance



Properties

- » Resistance to vibration and shock
- » Modern and innovating design
- » Made of engineering plastic material
- » Available for SC and LC adapters

Photos



How to order

FTTH-108 FTTH-108 Termination box

Information

- » Multiple cable entry points (cable diameter max. 6 mm)
- » Maximum capacity: 4 fibers
- » Size: 105,5 x 82,5 x 23,8 mm

Accessories

- » Pigtails
- » Adapters
- » Splice protectors