

# Column Distribution FTTH Frame

## Description

**Column distribution FTTH frame** is intended to build FTTH network in estate cottages. The housing is made of insulating, slow and self-extinguishing composite (polyester + fibreglass) resistant to weather conditions (UV). The module design allows fitting the housing to the foundation or cable pocket. The foundation closures can be dismantled without using additional tools, it allows easy fibre optic cables installation. Special design of the housing together with additional elements allows fast and easy equipment installation.

## Application

FTTx, PON.

## Properties

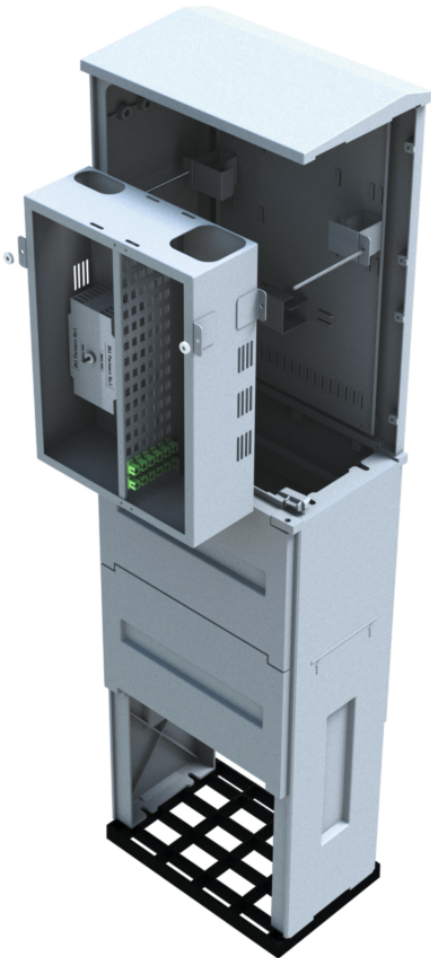
- » Housing made of composite,
- » Allows termination of the cables that reach the column from PABX side – customers cable and optical splitters,
- » With space for reserve operative fibres terminated in the column, what helps in easy cabling installation in service car,
- » RAL 7035 colour
- » Protection rating IP54
- » Mechanical resistance IK 10,
- » Dimensions 1440x400x250 [mm] height x width x depth

## Information

- » accommodates 8 splicing cassettes DIN24 WHITE – allows 192 splices installation
- » commutation field allows 96 SC/E2000 sx adapters installation
- » weight 26kgs

## Norms and certificates

- » Protection rating IP54 according to EN 60529
- » Mechanical resistance IK10 according to EN 50102



## Dimensions

